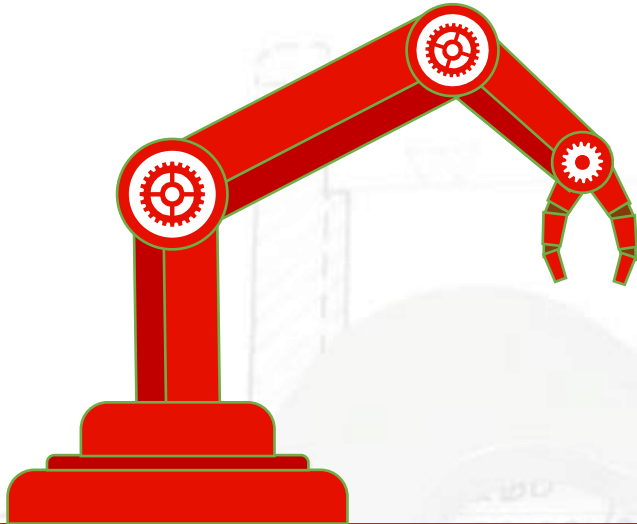


# POWER BEAM

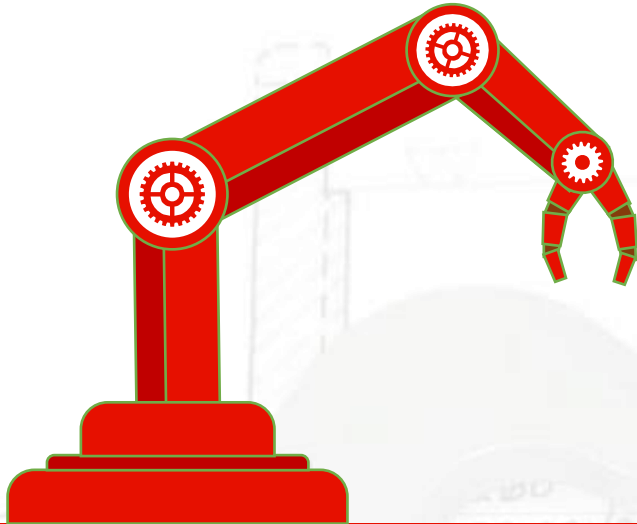


Shaping Impossible



# BACKGROUND DETAILS

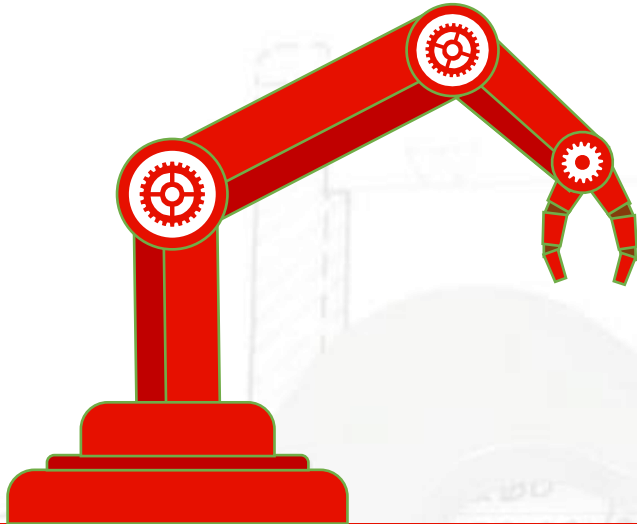
Company Name	: Power Beam Technology
Ownership Structure	: Partnership
GST No.	: 27AAGFP9274M1ZG
Establishment	: 01-04-2003
Employee Strength	: 25
Locations	: Chakan, Pune & Mahape, Navi Mumbai
Head Office	: Mahape, Navi Mumbai
Permanent Contact	: +91-9321917001
Designated Contact	: +91-9321917053
Email Address	: <a href="mailto:info@powerbeamtechnology.com">info@powerbeamtechnology.com</a>



# WHY US?

## Key Highlights

- Vast experience on laser processes
- In house machine maintenance to minimise machine shutdown
- Sufficient critical spares stocks to keep machine running
- Various precision quality checking tools
- Team with experience in intricate job execution
- Highest speed laser cutting machine in India with 6G acceleration to boost productivity
- 6 axis robotic laser welding & cutting machine
- Specific round pipe profile laser cutting machine for unusual requirements



# OUR CLIENTS



**ACC**

**SIEMENS**

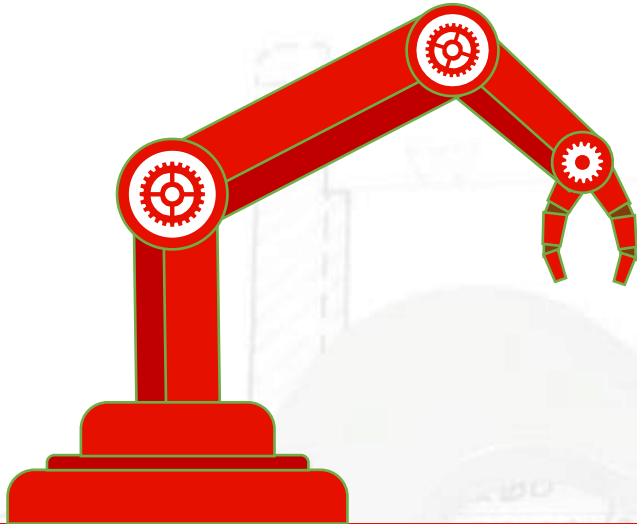
**Gabriel<sup>®</sup>**

**GEA**

**SECO/WARWICK**



Crompton  
Greaves



# MACHINERY LIST

#	MACHINE NAME	QTY
1	Fiber Laser Cutting Machine	1 No.
2	Rotary Pipe Laser Cutting Machine	1 No.
3	Fiber Laser Marking Machine	1 No.
4	CO2 Laser Engraving Machine	1 No.
5	TRUMP TruDISK Laser 2002	1 No.
6	Robotic Laser Welding and Cutting Setup	1 No.
7	Fine Spot Laser Welding Machine	1 No.
8	NC Bending Machine with 40 Tonne 1600 mm	1 No.
9	Milling Machine	1 No.
10	Turning Machine	1 No.
11	Lathe Machine Rolex	1 No.
12	Power Hacksaw Cutting Machine	1 No.
13	Vertical Drilling Machine	2 No.
14	Bench Grinder & Buffer	2 No.
15	Flexible Shaft Polisher	1 No.
16	Belt Grinder	1 No.
17	IGBT Arc & TIG Welding Machine	2 No.
18	Stud Welding Machine	1 No.
19	Tig/Mig Welding Machine	1 No.
20	CO2 Welding Machine	1 No.
21	Arc Welding Machine	1 No.

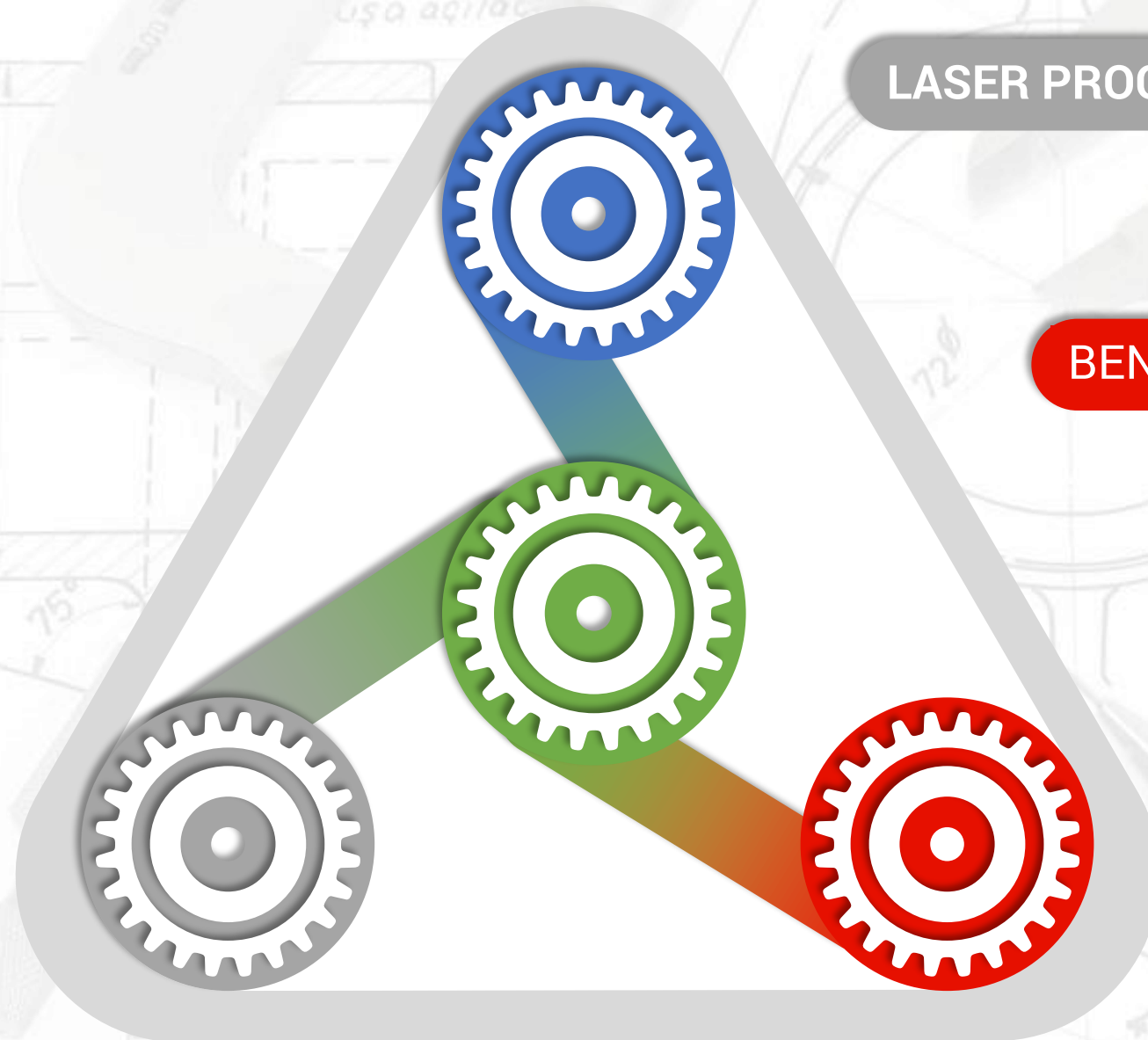


# QUALITY CHECKING TOOLS

#	TOOL NAME	QTY
1	Profile Projector	1 No.
2	Vernier Calliper 150 mm (Analog)	2 No.
3	Vernier Calliper 200 mm (Digital)	1 No.
4	Vernier Calliper 300 mm (Analog)	1 No.
5	Vernier Calliper 1500 mm (Mechanical)	1 No.
6	Dial Gauge 25 mm	1 No.
7	Thickness Gauge 50 mm	1 No.
8	Gap Fillers Gauge 0.03-1mm	1 No.
9	Screw Gauge	1 No.
10	Engineer's Square	1 No.
11	Micrometre 25 mm	3 No.
12	Vernier Height Gauge 150 mm	1 No.
13	Vernier Height Gauge 300 mm	1 No.
14	Inside & Outside Calliper Set	1 No.
15	Slip Gauge Set	1 No.
16	Digital Inclinometer	1 No.
17	Digital Protector	1 No.
18	Dial Bore Gauge	1 No.
19	Digital Microscope	1 No.



# WHAT WE DO



LASER PROCESSES

BENDING & WELDING

FABRICATION


MACHINING



**EDUCATE** THROUGH  
***PHOTOS***

OF PRODUCTS WE MANUFACTURE  
AND CAN ALSO CUSTOMISE AS PER  
CLIENT'S REQUIREMENTS AND OUR  
**CURRENT AREA OF  
FOCUS.**

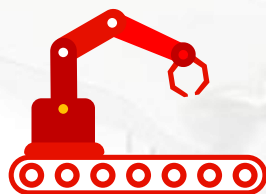


The background is a light gray technical drawing or blueprint. It features various geometric shapes, lines, and dimensions. A large circular arc with a radius dimension of '23' is prominent. Other dimensions include '45°', '15°', '75°', '60°', '140', '160', '40', and 'M8'. There are also smaller circular features and hatching patterns typical of engineering drawings. Overlaid on this background are faint images of drafting tools: a compass, a pencil, and a pair of dividers.

Products you will see, are  
made in Sheet Metals like  
**Stainless Steel,  
Mild Steel &  
Aluminum**

# LASER CUTTING

EASY TO CREATE COMPLEX SHAPES



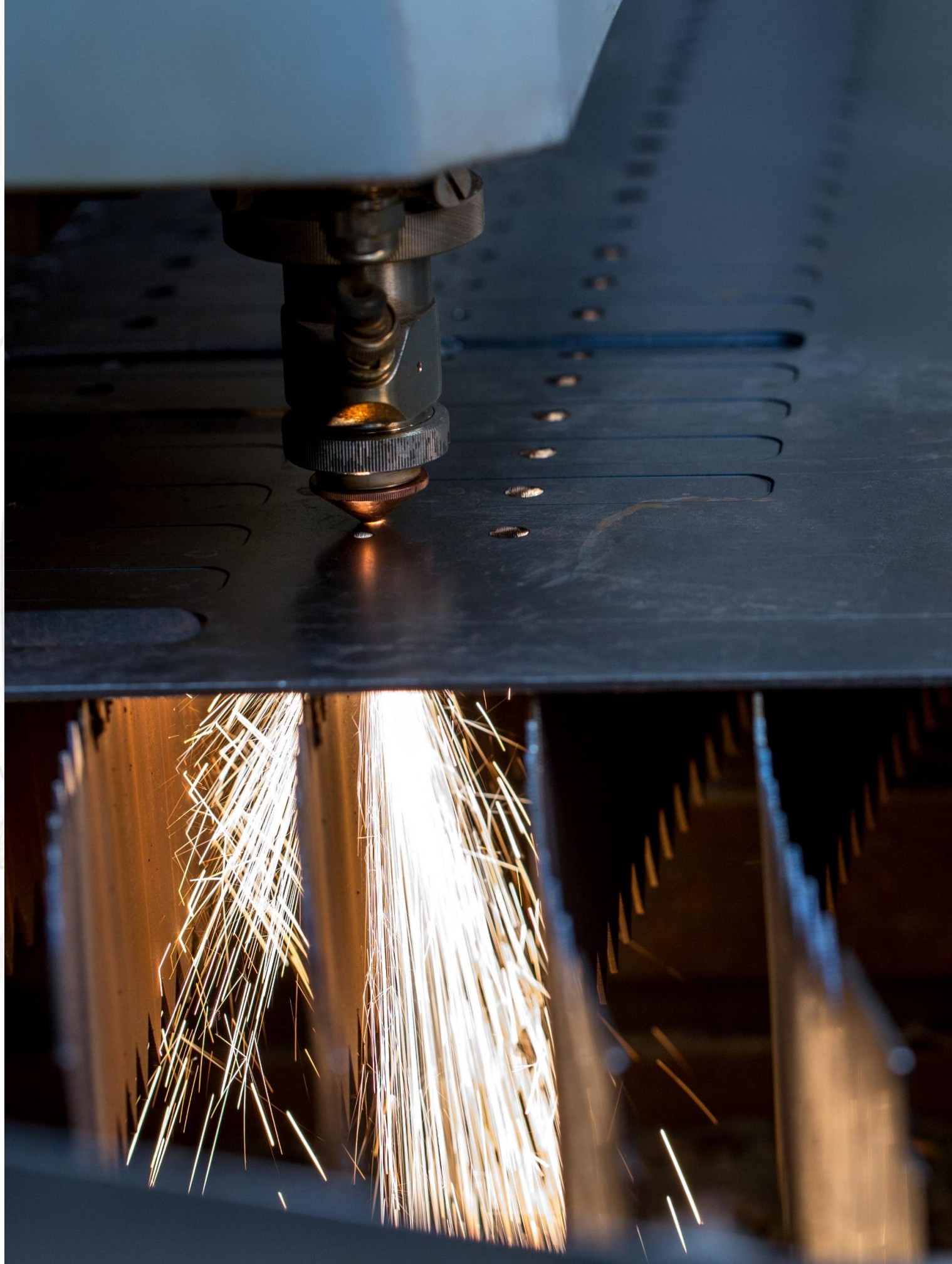
**Get a modern technology for your perfect job  
that is beautifully designed.**

State of the art laser cutting equipment with capability to deliver maximum productivity while maintaining quality and accuracy for the entire production. With intricate profiles was never possible without laser precision cutting.

DEVELOP

CUT

DELIVER







# C N C B E N D I N G

SOLUTION TO PERFECT ANGLE BEND



**Form and develop a component to its new dimensions.**

Functionally load Bending machine with capability to bend complex job with laser guided paths to CNC positioning and adaptable dies makes the job easy to achieve without errors following sequential bending simulation software.

PLAN

BEND

FABRICATE

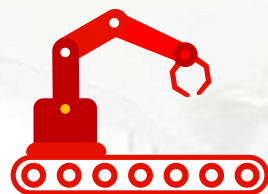


# W E L D

## A R C M I G T I G

## L A S E R

S T R E N G T H L I K E O R I G I N A L



**Welding capability to its core technology from laser welding to friction welding**

Welding is an art of engineering. It can create miracles when used with correct technology. Our skills and expertise towards welding technology makes us apart. We hold all kind of welding equipment's under one roof.

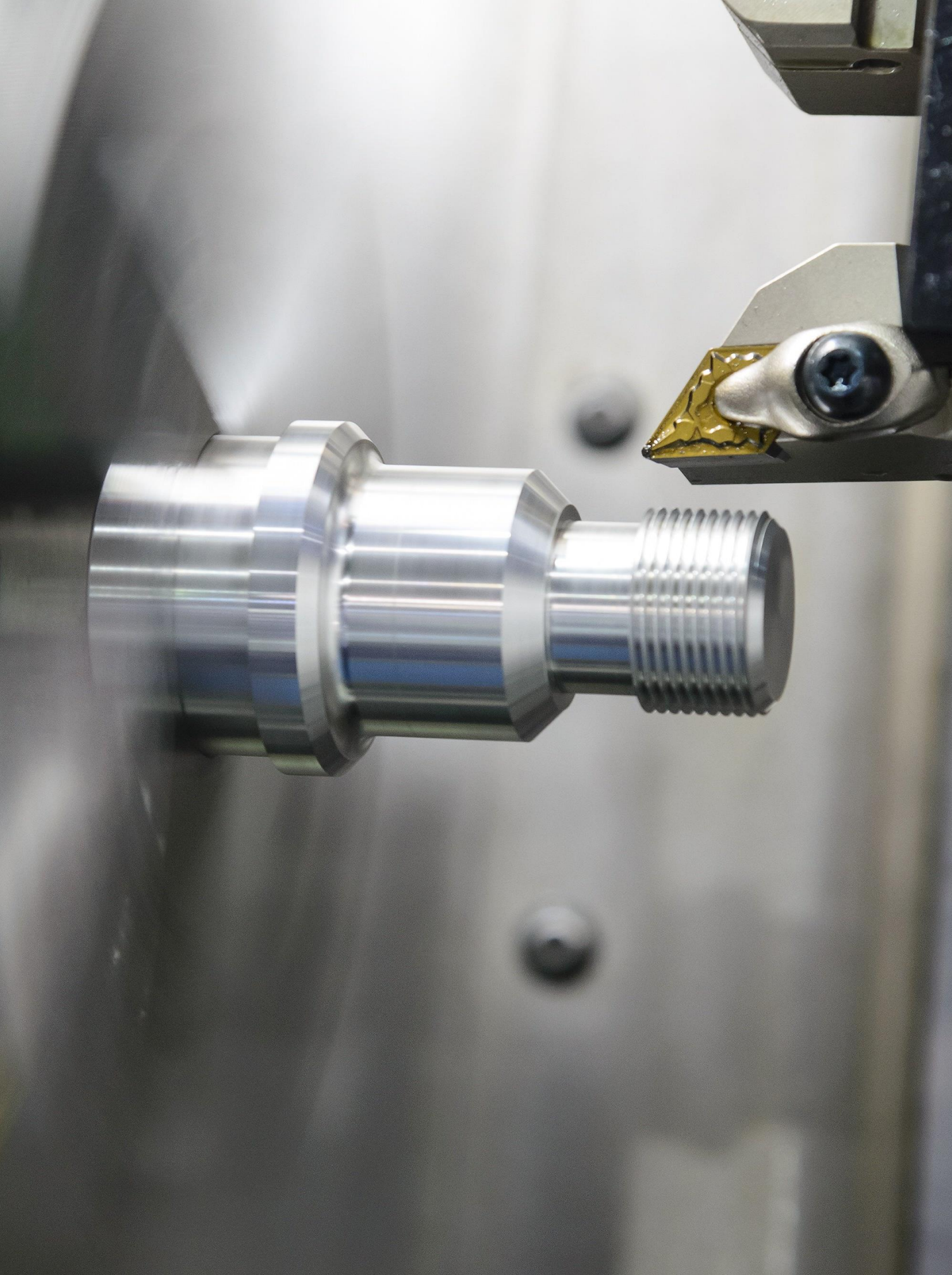
PREPARE

WELD

FINISH







# TOOLS

## MACHINING

MACHINING WITH HIGH PRECISION



**Machining of parts to assembly with accurate assembly with precision.**


We offer milling and turning capabilities using the latest in manufacturing technology to guarantee great results with precision machining.

PROGRAM

MACHINING

READY



The background is a technical drawing of a mechanical part, possibly a flange or a base plate, with various dimensions and angles. Overlaid on this drawing are several mechanical tools: a vernier caliper on the left, a depth gauge in the center, a dial indicator on the right, and a pencil at the bottom. The tools are rendered in a light, semi-transparent style. The text "OUTPUT PRODUCTS" is centered over the drawing in a bold, black, sans-serif font.

# OUTPUT PRODUCTS



ATM BOXES /  
KIOSKS



SPEAKER  
ENCLOSURE







DISPLAY  
KIOSK



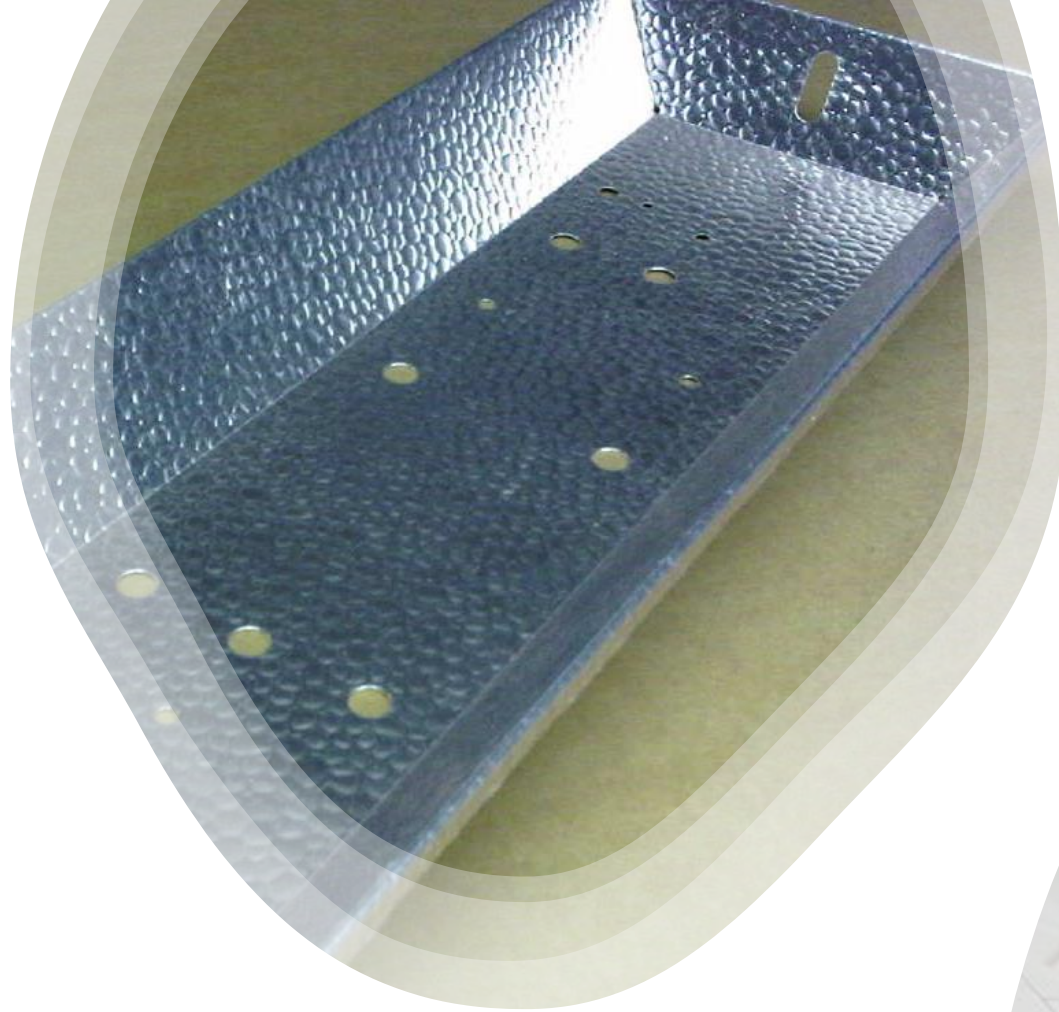
# CONTROL PANELS







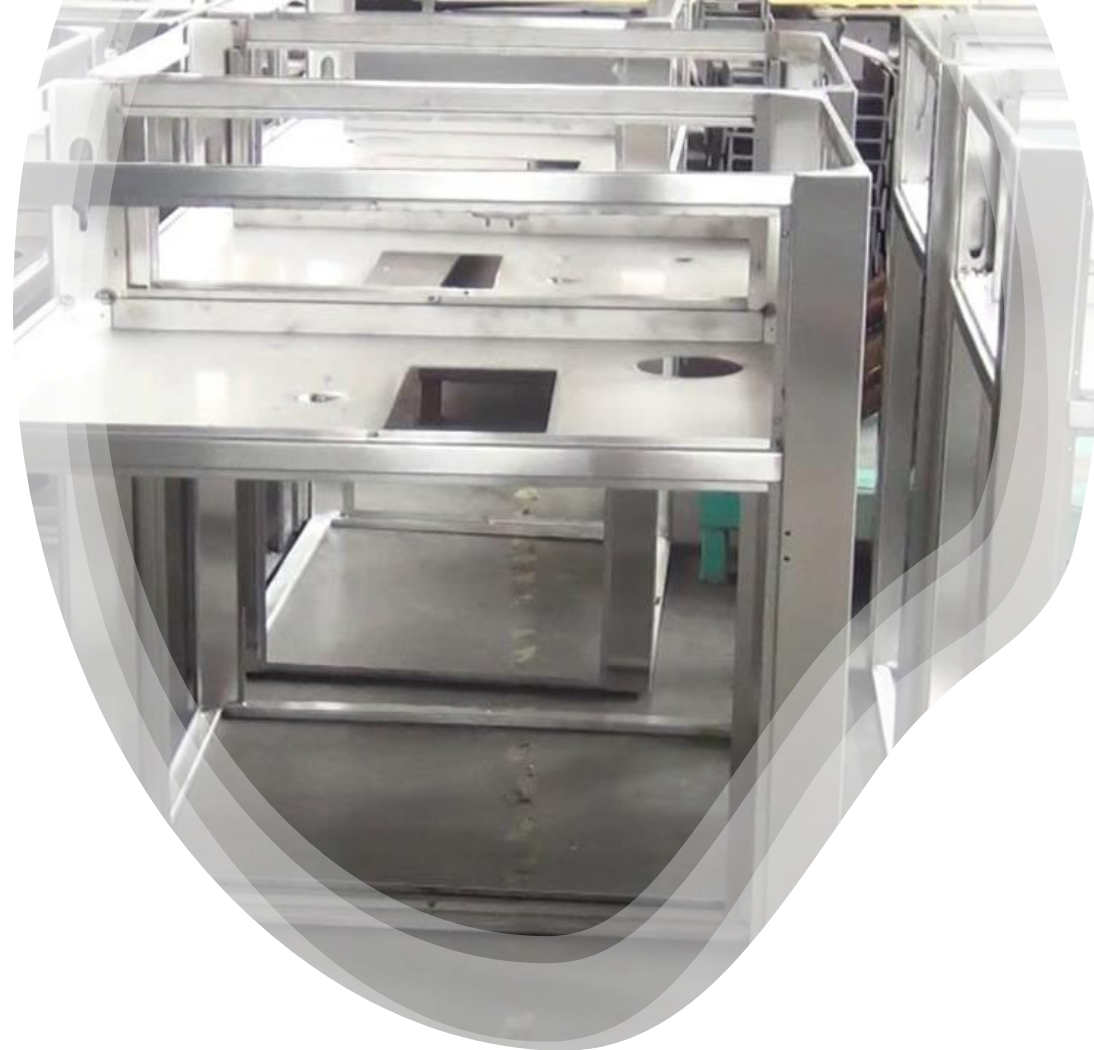
LIQUID TANKS



# LIGHT FITTINGS







MACHINE BASE  
FRAME



CHECK-IN  
PANEL



# CIGARETTE ASH COLLECTORS







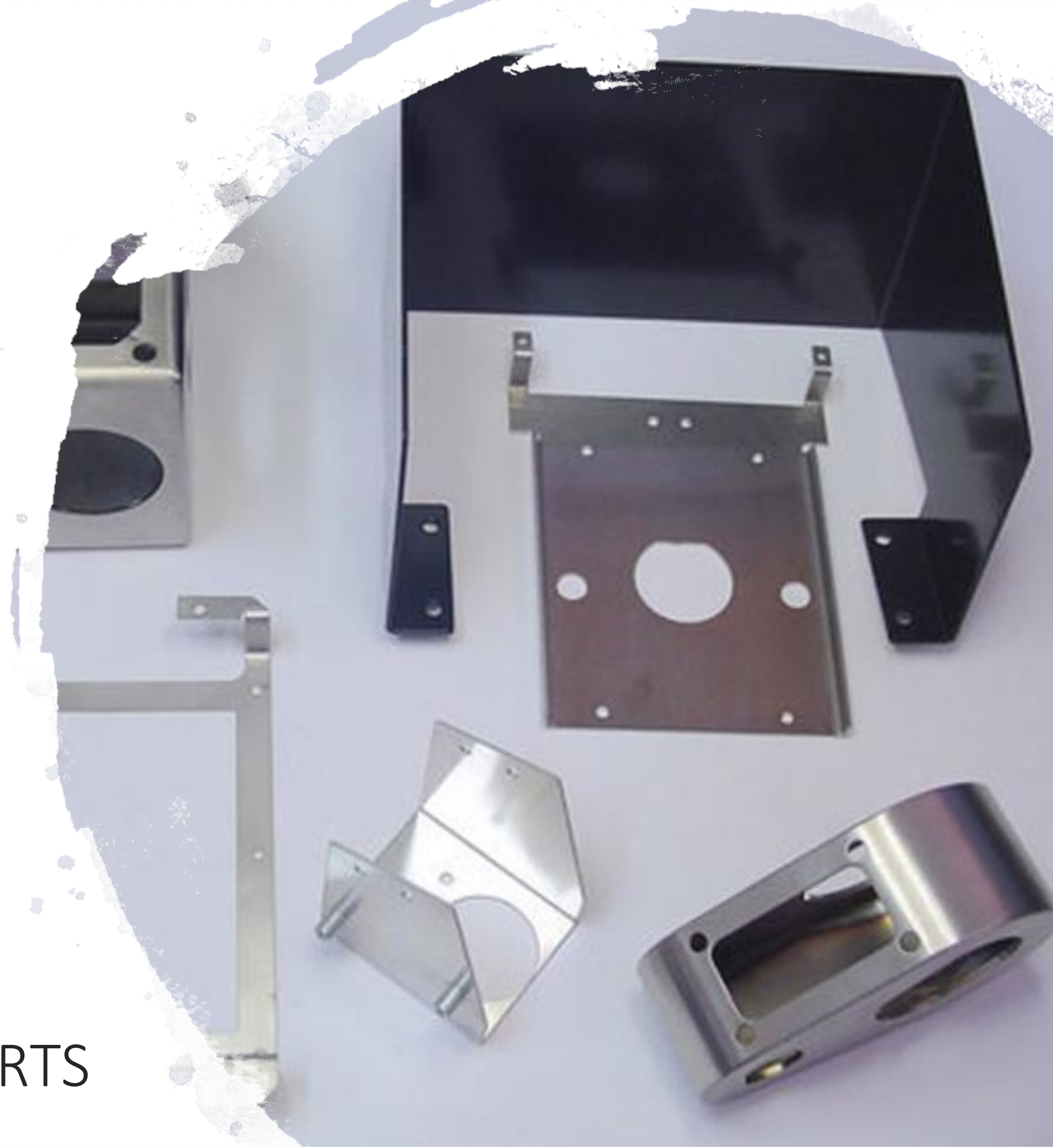
TROLLEYS

# MACHINE FRAME





CUTTING  
BENDING &  
FABRICATED PARTS





How Can We *Help* You?

☎ : +91-9321917053

✉ : [info@powerbeamtechnology.com](mailto:info@powerbeamtechnology.com)



**POWER BEAM**

 Shaping Impossible

*Thank You*